

Basic-L9

Semi-recessed luminaire for ceilings, mounting brackets incl - Direct only omnidirectional light distribution

Article code: 1BL9ASE-840H-D425



Illustrations may only be similar and serve as an orientation.

Basic-L9. LED. Semi recessed luminaire for ceilings with cut-out openings, mounting brackets incl. Luminaire body made of cast acrylic glass. Surface finish Radiant Silver. Direct only omnidirectional light distribution. Color temperature: 4000K (Cool White). Color Rendering Index (CRI): >80. Microprismatic screen for reduced luminance in office areas. Switchable. DxH (round). D=16,7". H=1,6"+2,6". High-power

current. 2840lm. 22W. 13,7lbs. Binning initial <= MacAdam 3. IP20. Protection class I. cETLus pending. IK02. 120-277V. 50-60 Hz. RG0 (EN62471). A minimum LED lifetime of 50,000h with 85% of lumen maintenance in 25°C ambient temperature, in compliance with IES LM-80 testing measurements. 5 years warranty. Manufacturer: Lightnet USA Inc

Basic-L9

Semi-recessed luminaire for ceilings, mounting brackets incl - Direct only omnidirectional light

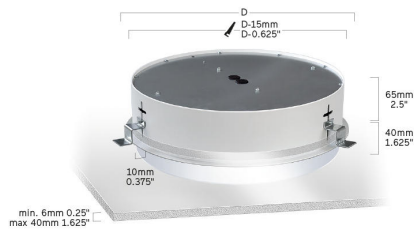


Article code: 1BL9ASE-840H-D425

Customer / Project: _____

Note: _____

Productname	Basic-L9
Lamp	LED
Installation Type	Semi-recessed luminaire for ceilings, mounting brackets incl
Surface finish	Radiant Silver
Light characteristics	Direct only omnidirectional light distribution
Color temperature	4000K
Color Rendering Index (CRI)	CRI>80
Optical system	Microprismatic screen
Control	Switchable
Length L/Diameter D (in)	D=16,7"
Height H (in)	H=1,6"+2,6"
Current/Power	High-Power
Luminous Flux	2840lm
Power consumption	22W
Voltage	120-277V
Degree of protection	IP20
Indoor/Outdoor	Indoor: ta [ambient] max. 25°C
LED lifetime	L85/50,000h (tq 25°C)
Certification	cETLus pending
Weight (lbs)	13,7lbs



IP20

-120-277V

50-60 Hz

IK 02

RG0

≤3 MACADAM

L85/50000h

CE

PENDING