

Midpoint P7/P8 | Suspended



DE Projecteur LED pour montage en suspension. Éclairage uniquement direct. Driver/Convertisseur intégré dans le corps du luminaire, au choix allumage ON/OFF ou dimmable (DALI). Corps du luminaire en aluminium thermolaqué/poudré blanc, argent, noir ou champagne. Autres options de finition voir Lightnet-Surface-Collection ou RAL au choix. Module/COB LED XICATO ARTIST en option pour une qualité d'éclairage maximale et un rendu des couleurs exceptionnel + 5 ans de garantie sur le niveau des couleurs (MacAdam \leq 3) ou ECO pour une efficacité énergétique et un rapport qualité-prix optimal + IRC supérieur à 90 inclus. Température de couleur 2700K, 3000K ou 4000K. Réflecteur avec optique de lentille interchangeable et facettes à réflexion sphérique. Angle d'ouverture/faisceau: 10° (Spot), 20° (Medium), 35° (Flood) ou 50° (Wide Flood). Adaptateur Rail-Track 3-Phases au choix EUTRAC ou GLOBAL. Diffuseur transparent de fermeture standard. Filtrés divers supplémentaires et/ou filtre nid d'abeilles en option. Câble d'alimentation au choix transparent, rouge ou noir.

ES Reflector LED para montaje colgante. Iluminación directa solo. Convertidor integrado en el cuerpo de la luminaria, opcionalmente conmutable por separado o regulable de forma continua (DALI). La carcasa de aluminio con cardán pintado en blanco, plata, negro o champán. Acabados adicionales según Light-Surface Collection o RAL seleccionable. LED Engine opcionalmente XICATO ARTIST para una máxima calidad de iluminación con la mejor reproducción cromática y una garantía de 5 años para la constancia del color (MacAdam \leq 3) o ECO para una máxima eficiencia energética con una óptima relación calidad-precio y CRI>90. Temperatura de color 2700K, 3000K o 4000K. Óptica de reflector de lentes intercambiables con óptica de facetas esféricas. Ángulo del rayo: 10° (Spot), 20° (Medium), 35° (Flood) o 50° (Wide Flood). Anillo reflector disponible en varios colores. Cubierta despejada estándar. Opcionalmente filtros adicionales o rejilla de panel. Cable de alimentación disponible en transparente, rojo o negro.

PP7 BSE-927FM-BKR

Product Family	P: Midpoint
Type	P7: Direct [Tube: 215mm], P8: Direct [Tube: 500mm]
Beam Angle	A: Spot 10°, B: Medium 20°, C: Flood 35°, D: Wide Flood 50°
Surface Finish	W: Snow White, V: Ivory White, S: Radiant Silver, B: Jet Black, H: Anodic Champagne
Control Gear	E: On/Off, L: DALI, H: Touch-Dim
Colour Rendering	9: CRI>90
Colour Temperature	27: 2700K, 30: 3000K, 40: 4000K
Led-Engine	F: Eco [Ra> 90], A: Artist [Ra> 97, Xicato]
Power	E: Low Power M: Medium Power
Optic Ring	W: Snow White, V: Ivory White, S: Radiant Silver, B: Jet Black, H: Anodic Champagne, G: Satin Gold, K: Satin Copper
Cover	K: Clear Cover [Standard], P: Prismatic Lens, H: Honeycomb Louvre
Cable Colour	T: Transparent, R: Red, B: Black
On Request	Optic Removal Tool for clear cover



Spot 10° Led Engine Eco, Medium Power

Mounting Height	Illuminance [Lux] center/side	Beam Diameter
1 m	25250/12700	0.24 m
2 m	6312/3175	0.48 m
3 m	2806/1411	0.72 m
4 m	1578/794	0.95 m

LED Engine	2700K	3000K	4000K
Eco Low			
Power [19W]	1230 lm	1350 lm	1440 lm
Eco Medium			
Power [31W]	1660 lm	1860 lm	2020 lm
Artist Low			
Power [19W]	1040 lm	1090 lm	1190 lm
Artist Medium			
Power [31W]	1400 lm	1480 lm	1560 lm

Medium 20° Led Engine Eco, Medium Power

Mounting Height	Illuminance [Lux] center/side	Beam Diameter
1 m	17447/8455	0.32 m
2 m	4362/2114	0.64 m
3 m	1939/939	0.96 m
4 m	1090/528	1.30 m

LED Engine	2700K	3000K	4000K
Eco Low			
Power [19W]	1580 lm	1740 lm	1850 lm
Eco Medium			
Power [31W]	2360 lm	2640 lm	2870 lm
Artist Low			
Power [19W]	1330 lm	1390 lm	1510 lm
Artist Medium			
Power [31W]	1980 lm	2110 lm	2220 lm

Flood 35° Led Engine Eco, Medium Power

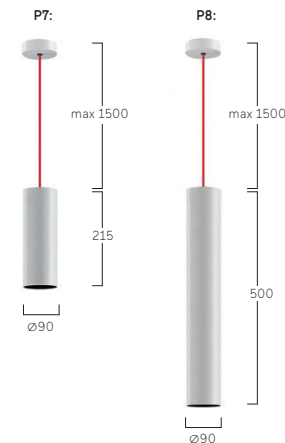
Mounting Height	Illuminance [Lux] center/side	Beam Diameter
1 m	6251/2731	0.63 m
2 m	1563/683	1.30 m
3 m	695/303	1.90 m
4 m	391/171	2.50 m

LED Engine	2700K	3000K	4000K
Eco Low			
Power [19W]	1530 lm	1680 lm	1790 lm
Eco Medium			
Power [31W]	2280 lm	2550 lm	2780 lm
Artist Low			
Power [19W]	1290 lm	1350 lm	1470 lm
Artist Medium			
Power [31W]	1930 lm	2060 lm	2160 lm

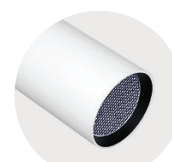
Wide Flood 50° Led Engine Eco, Medium Power

Mounting Height	Illuminance [Lux] center/side	Beam Diameter
1 m	3550/1319	0.94 m
2 m	887/330	1.90 m
3 m	394/147	2.80 m
4 m	222/82	3.80 m

LED Engine	2700K	3000K	4000K
Eco Low			
Power [19W]	1440 lm	1580 lm	1680 lm
Eco Medium			
Power [31W]	2230 lm	2490 lm	2710 lm
Artist Low			
Power [19W]	1250 lm	1310 lm	1430 lm
Artist Medium			
Power [31W]	1910 lm	2040 lm	2140 lm



Optic Removal Tool for clear cover



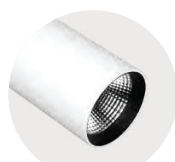
Honeycomb Louvre



Prismatic Lens



W Snow White
W Snow White



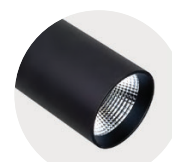
W Snow White
B Jet Black



W Snow White
G Satin Gold



S Radiant Silver
S Radiant Silver



B Jet Black
B Jet Black



B Jet Black
G Satin Gold