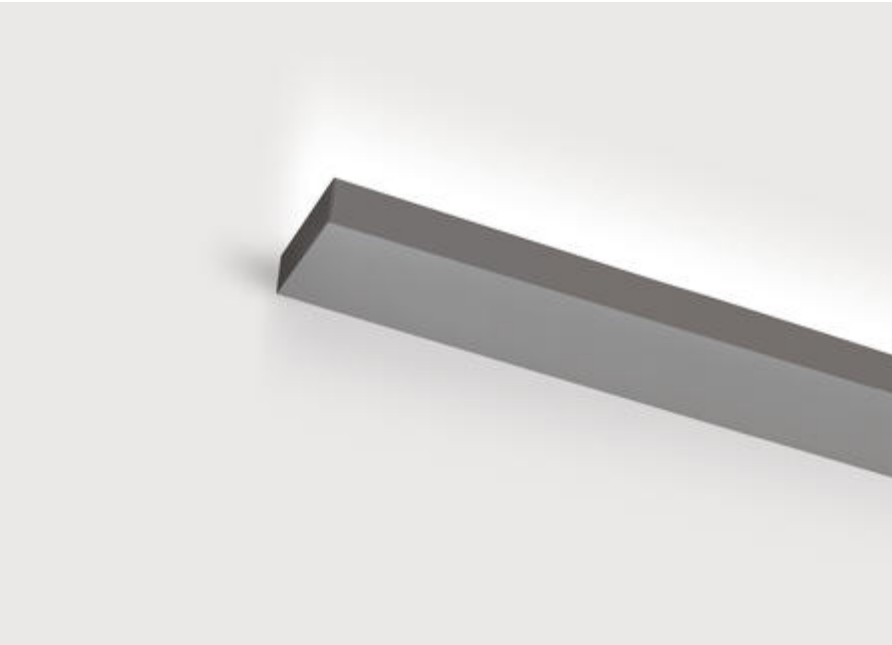


## Matric-JX

Wall mounted luminaire - Indirect light distribution

Article code: LJXAEE-840M-Lxxxx



Illustrations may only be similar and serve as an orientation.

Matric-JX. LED. Wall mounted luminaire. Luminaire body made of high-quality aluminum profile. Surface finish Silver Anodised. Indirect only light distribution. Colour temperature:4000K (Cool White). Colour Rendering Index (CRI): >80. Microprismatic screen for reduced luminance in office areas. Switchable. according to drawing. LxWxH (rectangular). Special length L=xxxxmm. W=75mm. H=45mm. Medium-

power current. 1400lm/m. 22W/m. Binning initial <= MacAdam 3. IP20. Protection class I. CE, UKCA marking. IK02. 220-240V. 50-60 Hz. RG0 (EN62471). Luminous flux reduction up to 0,3%/1.000 operating hours. Nominal failure rate: 0,2%/1.000 operating hours. L85B10 (tq 25°C) = 50.000h. 5 years warranty. Manufacturer: Lightnet GmbH, ISO 9001:2015 certificated

## Matric-JX

Wall mounted luminaire - Indirect light distribution

Article code: LJXAEE-840M-Lxxxx

Customer / Project: \_\_\_\_\_

\_\_\_\_\_

Note: \_\_\_\_\_

\_\_\_\_\_

Productname	Matric-JX
Lamp	LED
Installation Type	Wall mounted luminaire
Surface finish	Silver Anodised
Light characteristics	Indirect light distribution
Colour temperature	4000K
Colour Rendering Index (CRI)	CRI>80
Optical system	Microprismatic screen
Control	Switchable
Length L/Diameter D (mm)	Special length L=xxxxmm
Width W (mm)	W=75mm
Height H (mm)	H=45mm
Current/Power	Medium-Power
Luminous Flux	1400lm/m
Power consumption	22W/m
Degree of protection	IP20
LED lifetime	L85B10 (tq 25°C) = 50.000h
Photometric code	8 40 / 3 3 9
Photobiological class	RG0 (EN62471)
Indoor/Outdoor	Indoor: ta [ambient] max. 25°C
Other	according to drawing

