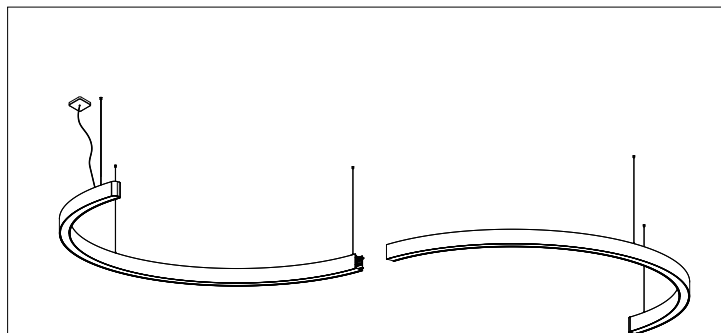
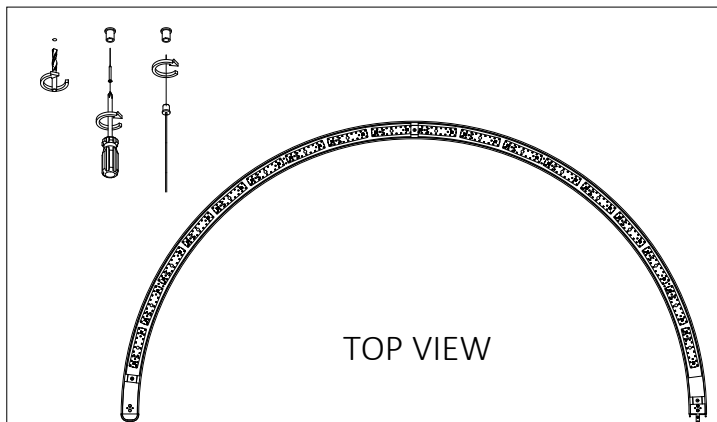


LIQUID LINE G3/P3 | SYSTEM 60MM SUSPENDED

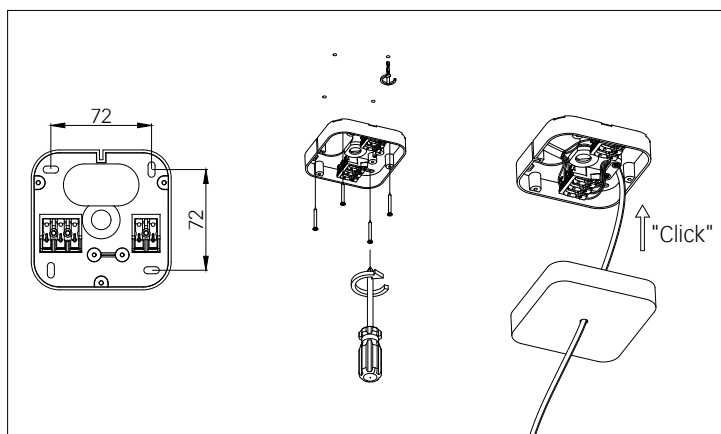
1. MONTAGE UND INSTALLATION | MOUNTING AND INSTALLATION:



1. The luminaire must be installed in the order indicated on the labels, starting with parts A, B, C...



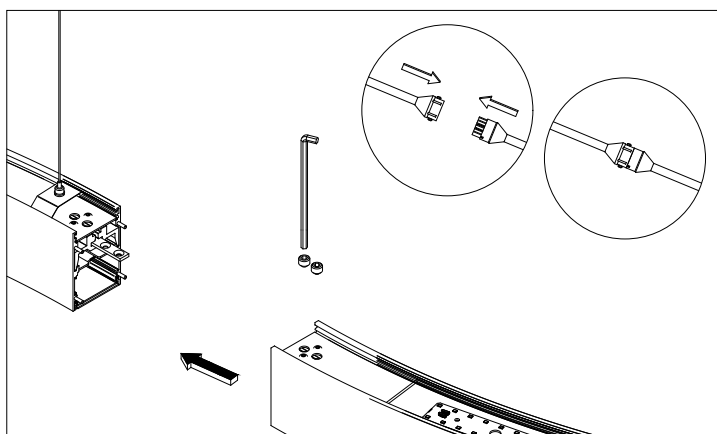
2. Distance between suspension points in the attached acc. drawing 1.



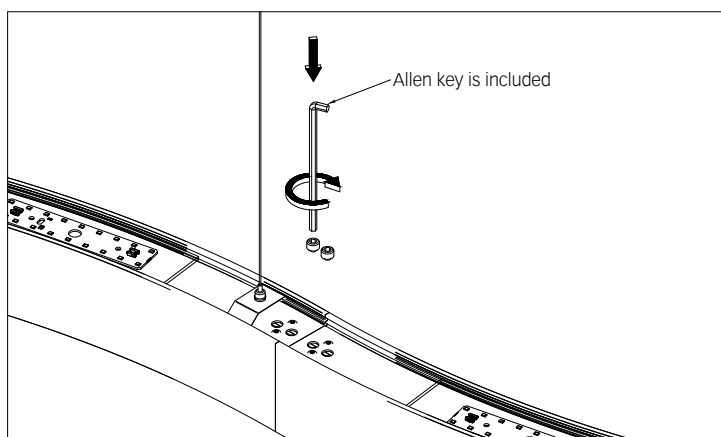
3.

- min/max stripped wire length: 7mm-10mm

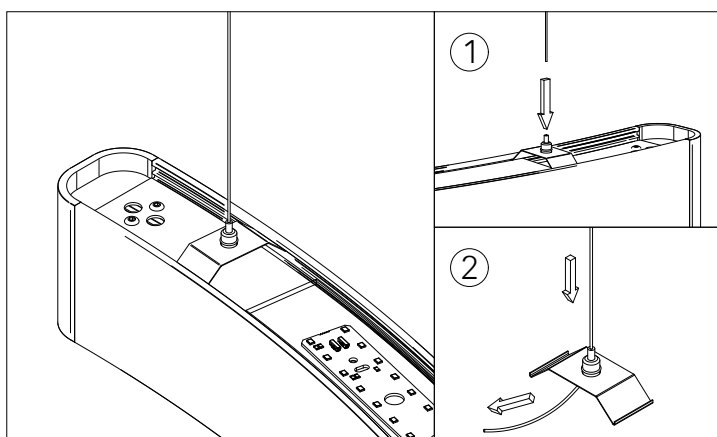
- max power supply cable: 1,5mm²



4. All LED gear trays are numbered and the numbering starts from the cable entry side. In non-standard luminaires the numbering of LED gear trays is made in accordance with technical drawings.



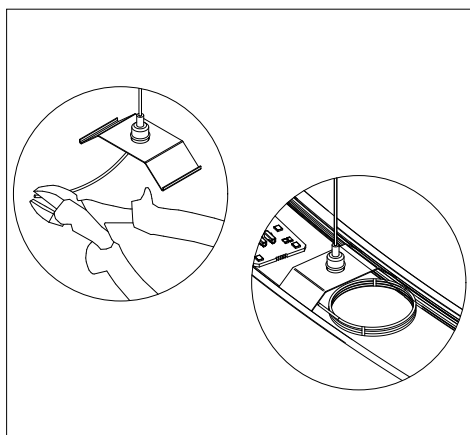
5.



6.

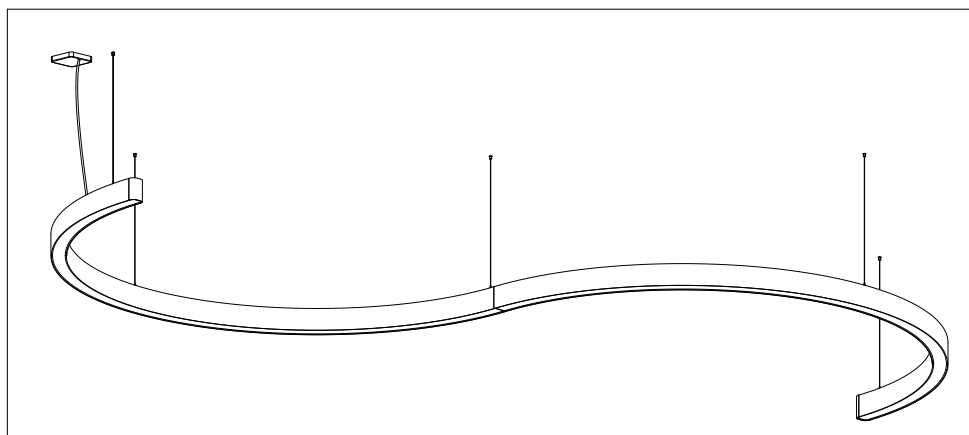
LIQUID LINE G3/P3 | SYSTEM 60MM SUSPENDED

1. MONTAGE UND INSTALLATION | MOUNTING AND INSTALLATION:



7. IMPORTANT!

After levelling the luminaire at the desired height, cut off the excess of the suspension cord or roll it up and secure it to avoid a short-circuit caused by contact with the light sources.



8. IMPORTANT:

- all sections must be suspended individually and perfectly levelled (horizontally and vertically) before connecting them together this is crucial
- all suspension cords must be positioned perfectly vertical
- all suspension cords must be tensioned with the same strength
- if these conditions are not satisfied then the different parts will settle to different levels and work against one another.

2. VERBINDER | CONNECTORS:

