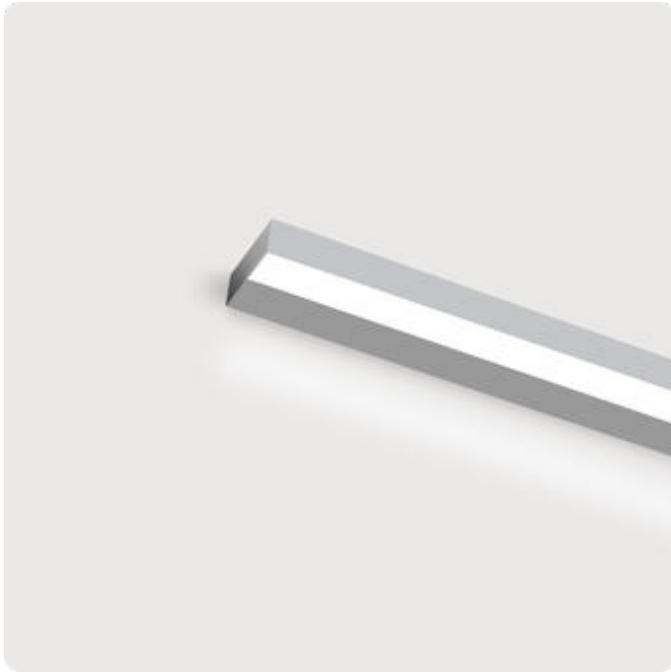


## Matric-DX

Wall mounted luminaire - Direct light distribution

Article code: 1LDXAED-830M-Lxxxx



Illustrations may only be similar and serve as an orientation.

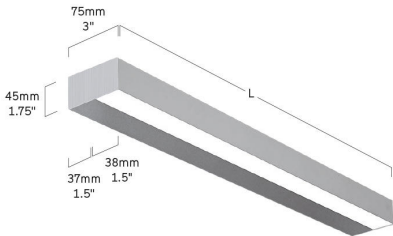
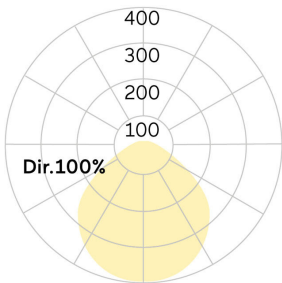
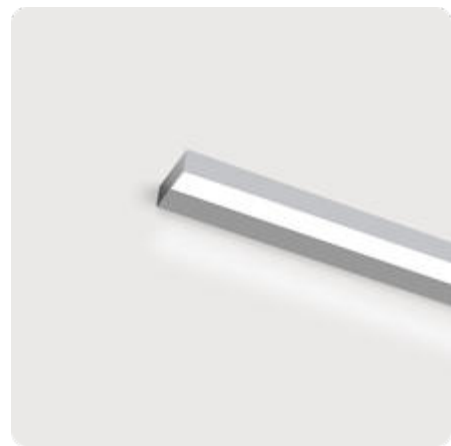
Matric-DX. LED. Surface-mounted luminaire for horizontal wall mounting. Surface finish Silver Anodised. Direct only light distribution. Color temperature: 3000K (Warm White). Color Rendering Index (CRI): >80. Microprismatic screen for reduced luminance in office areas. Single dimmed 0-10V. according to drawing. LxWxH (rectangular). L=xxxx". W=3". H=1,8". Medium-power current. 402lm/ft. 7W/ft. Binning

initial <= MacAdam 3. IP20. Protection class I. cETLus. IK02. 120-277V. 50-60 Hz. RG0 (EN62471). A minimum LED lifetime of 50,000h with 85% of lumen maintenance in 25°C ambient temperature, in compliance with IES LM-80 testing measurements. 5 years warranty. Manufacturer: Lightnet USA Inc

Matric-DX

Wall mounted luminaire - Direct light distribution

Article code: 1LDXAED-830M-Lxxxx



Customer / Project: \_\_\_\_\_

Note: \_\_\_\_\_

Productname	Matric-DX
Lamp	LED
Installation Type	Wall mounted luminaire
Surface finish	Silver Anodised
Light characteristics	Direct light distribution
Color temperature	3000K
Color Rendering Index (CRI)	CRI>80
Optical system	Microprismatic screen
Control	Dimmable (0-10V)
Length L/Diameter D (in)	L=xxxx"
Width W (in)	W=3"
Height H (in)	H=1,8"
Current/Power	Medium-Power
Luminous Flux	402lm/ft
Power consumption	7W/ft
Voltage	120-277V
Degree of protection	IP20
LED lifetime	L85/50,000h (tq 25°C)
Certification	cETLus
Indoor/Outdoor	Indoor: ta [ambient] max. 25°C
Other	according to drawing

